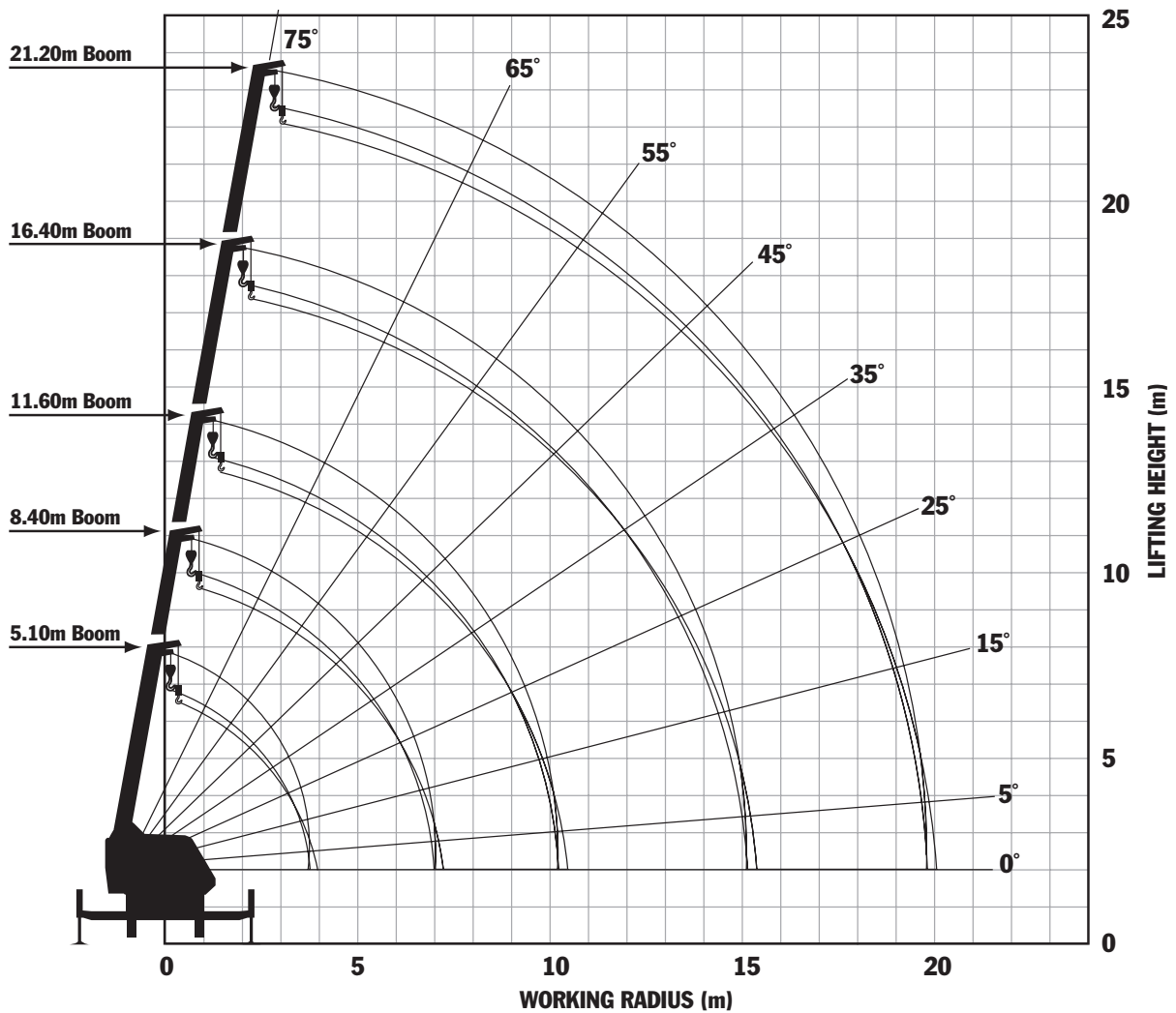


WORKING RADIUS – LIFTING HEIGHT



Crane Width 1995, Outrigger fully extended width 4400, Outrigger half extended width 2700					
Operating Radius (m)	Total Rated Loads – Main Boom Outriggers fully extended (360°)				
	4.90m	8.10m	11.30m	17.70m	21.20m
1.0	7.00	4.90			
1.5	7.00	4.90	4.90		
2.0	7.00	4.90	4.90		
2.5	7.00	4.90	4.90	4.00	
3.0	6.10	4.90	4.90	4.00	1.40
3.5	5.30	4.90	4.90	4.00	1.40
4.0	4.90 (3.7m)	4.50	4.50	4.00	1.40
4.5		3.85	3.87	3.50	1.40
5.0		3.33	3.37	3.13	1.40
5.5		2.95	2.97	2.82	1.40
6.0		2.62	2.65	2.56	1.40
7.0			2.14	2.15	1.40
8.0			1.77	1.84	1.40
9.0			1.48	1.60	1.23
10.0			1.20	1.40	1.09
11.0				1.25	0.90
12.0				1.07	0.89
13.0				0.88	0.82
14.0				0.73	0.75
15.0				0.60	0.69
16.0				0.49	0.64
17.0					0.57
18.0					0.50
19.0					0.41
20.0					
21.0					

