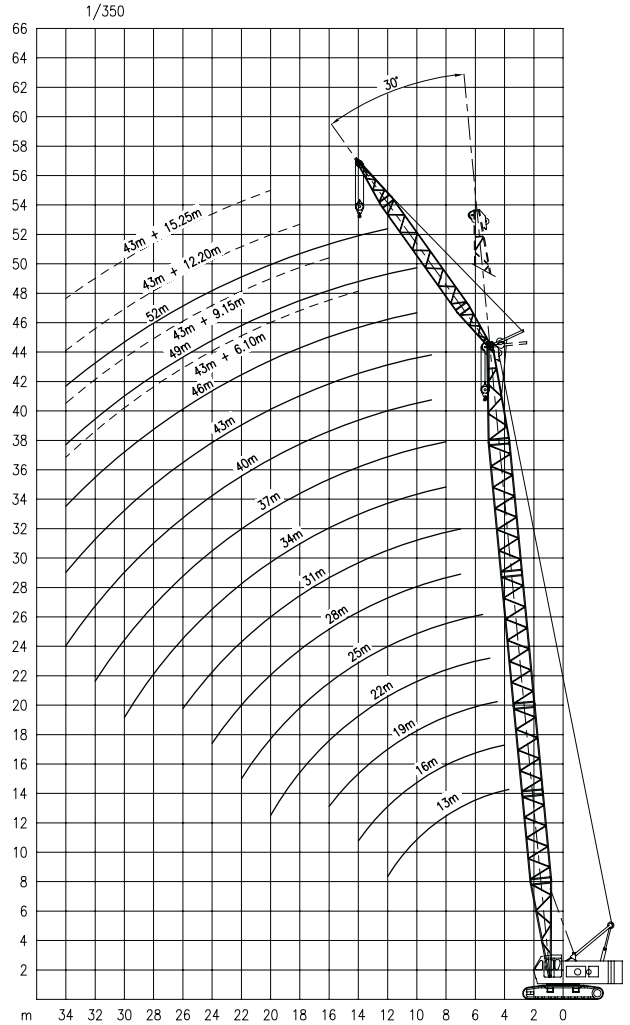
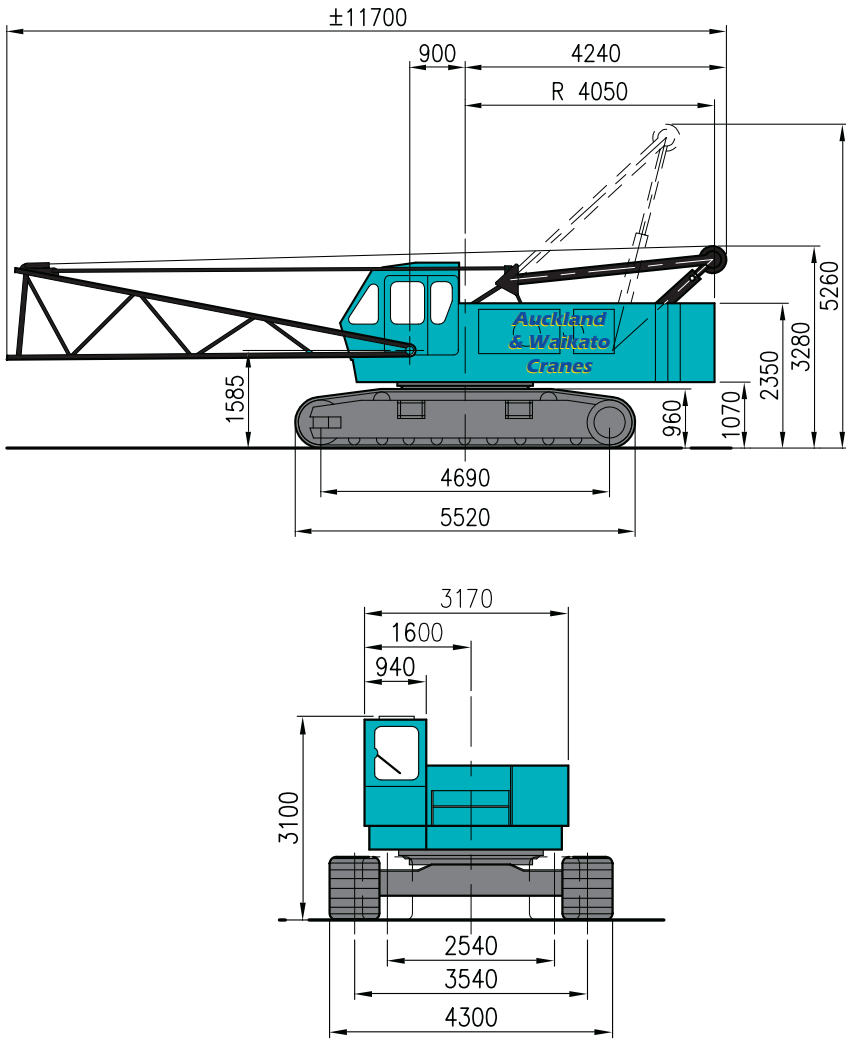


# 50 TONNE

# HITACHI KH 180



Boom length	13	16	19	22	25	28	31	34	37	40	43	46	49	52
3.7	50.00													
4.0	43.00	44.95												
4.5	35.00	36.40	37.30											
5.0	29.00	30.60	31.00	31.10										
5.5	25.00	26.40	26.70	26.77	26.55									
6.0	22.00	23.00	23.40	23.45	23.23	23.15								
7.0	18.00	18.50	18.70	18.71	18.48	18.42	18.30							
8.0	15.00	15.30	15.50	15.49	15.25	15.21	15.11	15.00	14.90					
9.0	12.60	13.10	13.20	13.16	12.92	12.89	12.79	12.65	12.57	12.50	11.20			
10.0	11.00	11.30	11.50	11.40	11.15	11.13	11.03	10.89	10.81	10.73	10.68	10.55	10.45	
12.0	8.60	8.90	9.00	8.91	8.66	8.64	8.55	8.40	8.32	8.22	8.16	8.06	7.93	8.00
14.0		7.30	7.34	7.23	6.98	6.97	6.88	6.73	6.64	6.53	6.47	6.35	6.24	6.20
16.0			6.14	6.03	5.77	5.77	5.68	5.53	5.44	5.32	5.25	5.13	5.02	4.96
18.0				5.12	4.86	4.86	4.77	4.62	4.53	4.41	4.34	4.21	4.10	4.02
20.0				4.41	4.15	4.16	4.06	3.91	3.83	3.70	3.62	3.49	3.38	3.29
22.0					3.58	3.59	3.50	3.34	3.26	3.12	3.05	2.91	2.80	2.70
24.0						3.12	3.03	2.88	2.79	2.65	2.57	2.43	2.33	2.22
26.0							2.64	2.49	2.40	2.26	2.18	2.04	1.79	1.82
28.0								2.16	2.07	1.93	1.85	1.70	1.60	1.48
30.0								1.88	1.79	1.65	1.56	1.41	1.32	1.18
32.0									1.54	1.40	1.31	1.16	1.07	0.93
34.0										1.18	1.10	0.95	0.85	0.71

